

Validation

ham, raw salmon, frozen prawn, fresh
, cream puff and potato salad.

05)/ NordVal (Certificate No. 062)

son to ISO 6888-1: 2021. Microbiology of the
umeration of coagulase-positive *staphylococci*
cies) Part 1: method using Baird-Parker agar

egory: milk and dairy products, fishery products, produce
poultry, multi-component foods or meal componenets.)

· Colony Counting System for Easy Plate

· Feeder for Easy Plate

Simpler, time-saving way to count colonies that eliminates
the effects of variation and skill level among operators.
With the Feeder for Easy Plate, batch scanning is available.

*Requires use of the scanner ADS-4300N by BROTHER INDUSTRIES,LTD.
for imaging Easy Plate. Scanner sold separately.



For more product information, visit our website:
<https://biochemifa.kikkoman.com/e/kit/product/easy-plate/>



User's Responsibilities:

Kikkoman Biochemifa Company Easy Plate™ performance has not been validated for all microbial flora, incubation condition, and food matrix combinations. Users must confirm that their test methods and results meet their own requirements. Please note that printer settings may influence the image and color quality if this Interpretation Guide is reprinted.

For comprehensive information regarding CAUTIONS, DISCLAIMER OF WARRANTIES/ LIMITED REMEDY, LIMITATION OF LIABILITY, STORAGE AND DISPOSAL, and INSTRUCTIONS FOR USE, please consult the product instructions.

kikkoman
Kikkoman Biochemifa Company

2-1-1 Nishi-Shinbashi, Minato-ku,
Tokyo 105-0003, Japan

Info-biochemifa@mail.kikkoman.co.jp
<https://biochemifa.kikkoman.com/e/kit/>
©2026 Kikkoman Corp. (6012Y260401)

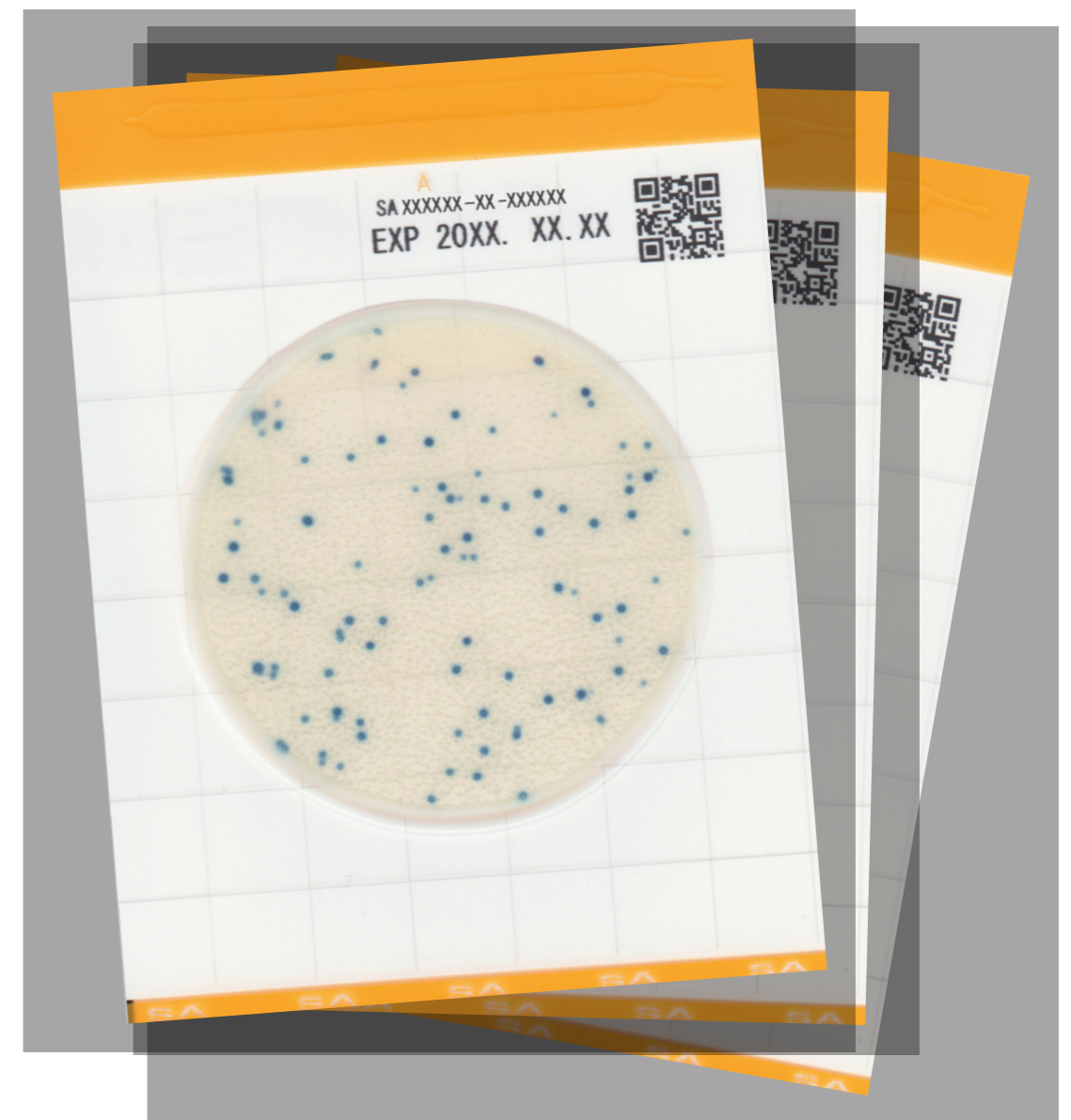
Follow us on
social media!



FMCG Industry Solutions Pty Ltd
ABN 22 135 446 007
Factory 11A, 1 - 3 Endeavour Rd, Caringbah NSW 2229
www.fmcgis.com.au
sales@fmcgis.com.au
1300 628 104 or 02 9540 2288

Easy Plate™ SA

Interpretation Guide

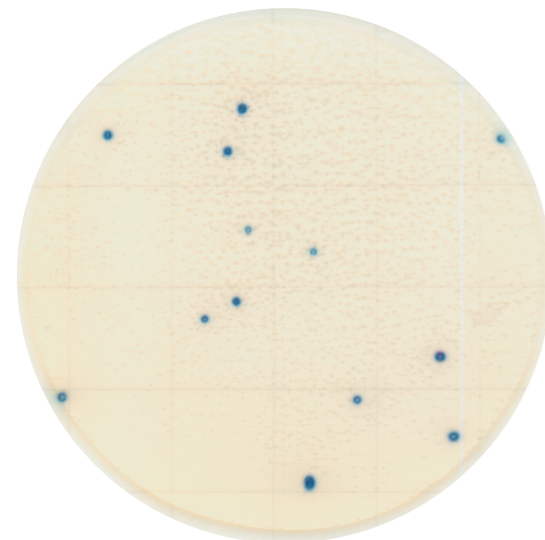


kikkoman
Kikkoman Biochemifa Company

Introduction

Easy Plate™ is a ready-to-use prepared media plate that eliminates media preparation and sterilization. It offers a convenient alternative to traditional in-house media preparation, saving time, labor, and reducing waste. With approximately 1/20 the volume of a standard petri dish, Easy Plate maximizes incubator space efficiency while enabling more simultaneous tests. Simply open the package, apply your sample suspension, and begin incubation immediately.

Easy Plate SA is a microbiological culture device made up of a waterproof sheet, a readymade dry medium on the sheet and a transparent cover over the medium. The Easy Plate SA method is intended to indicate the level of *Staphylococcus aureus* in food and beverage products. The chromogenic medium is selective and discriminable for *Staphylococcus aureus*. For exceptional cases, please refer to the inclusivity/exclusivity list in the appendix.



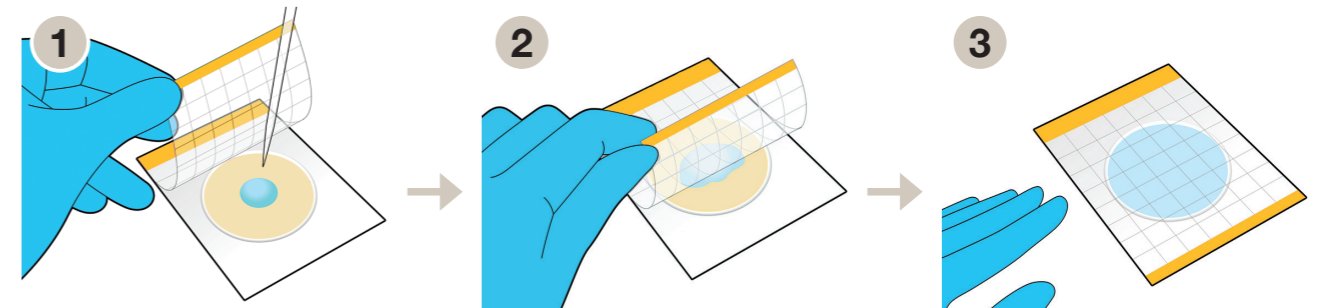
Staphylococcus aureus form blue colonies. The suitable colony counting range is 1-250. Count all blue colonies as *S. aureus*. The test is complete.

S. aureus count = 13
(Image: *S. aureus* NBRC 100910)

General information

Incubation time	24 ± 1 hours
Incubation Temperature	35 or 37 ± 1°C
Storage	Store in the refrigerator (2-8°C) After opening the package, fold the open end of the package at least 2 times and tape it. Store in a refrigerator (2 to 8°C) and use within 3 months
Shelf life	12 months after manufacturing date
Certification	AOAC PTM, MicroVal, NordVal Certified

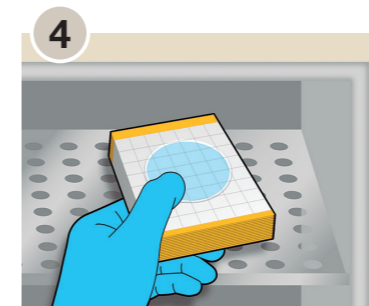
Quick Reminder of How to Use



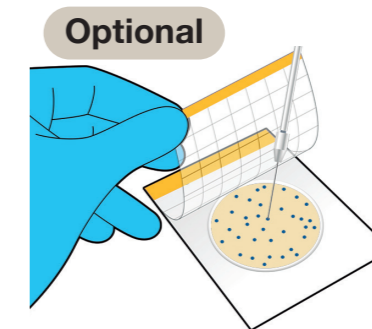
1 Lift the cover and place 1 mL sample suspension onto the plate.

2 Lower the cover onto the sheet and allow the sample to spread evenly.

3 Allow the plate to settle for 3 min or more on a horizontal surface for solidification.



4 Incubate the plate(s) at 35 or 37 ± 1°C for 24 ± 1 hours. Up to 25 plates can be stacked for space saving and convenience.



Optional
Colony Isolation: Lift the cover and pick a single colony from the gel.

Note for Sample Diluents and Sample Treatment

■ Use Appropriate Sterile Diluents

Butterfield's Phosphate-Buffered Diluent or appropriate diluents according ISO6887.

■ About pH of Sample

This product is basically designed for use with samples that have a pH near neutral. However, if necessary, you can adjust the sample to an appropriate pH for the growth of the target microorganism using a buffer solution.

Examples of buffer solutions that can be used for pH adjustment

- Butterfield's Phosphate-Buffered Dilution Water
- Phosphate-Buffered Saline
- Buffered Peptone Water

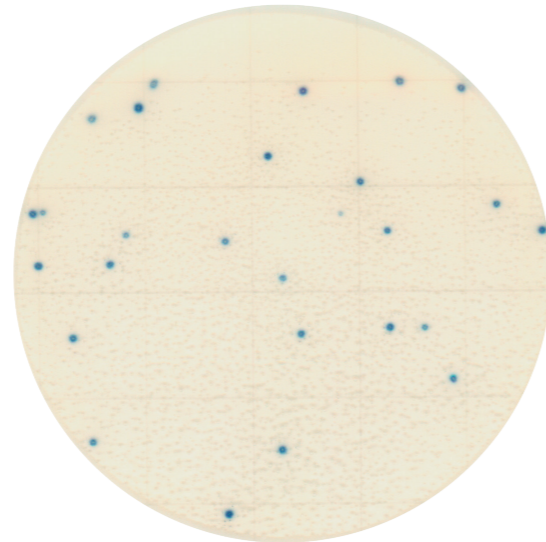
If adjustment is difficult even with the above buffer solutions, 2xBPW and 2xPBS, which have twice the buffering capacity, can also be used.

Interpretation

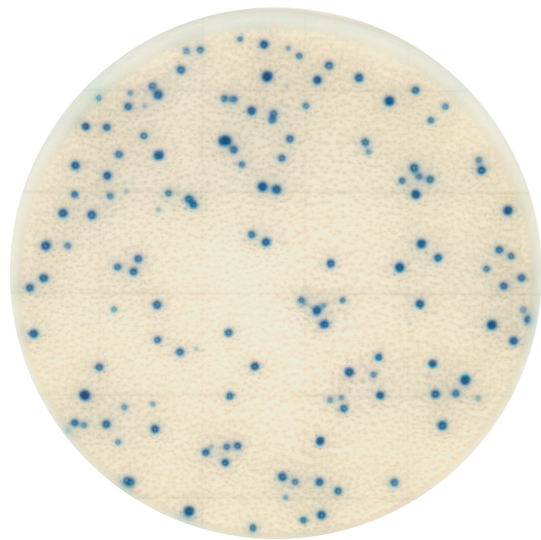
Staphylococcus aureus form blue colonies. The suitable colony counting range is 1-250.



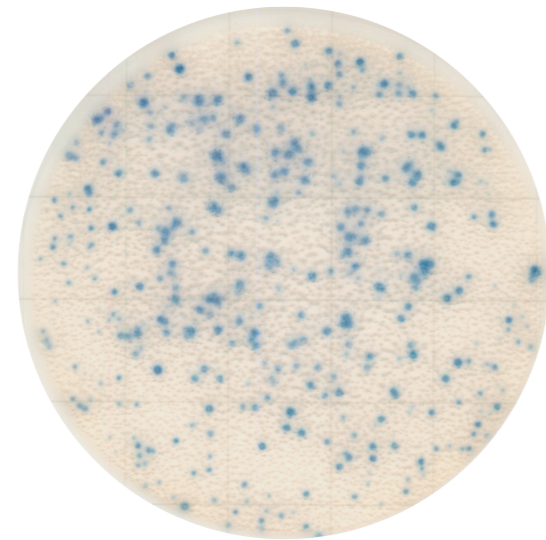
S. aureus count = 0
(*S. enterica* NBRC 105726)



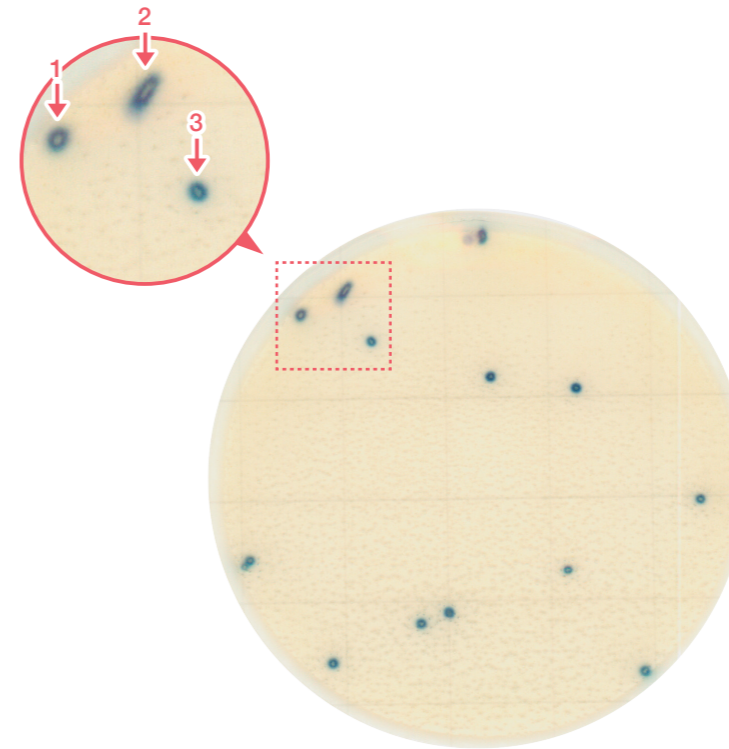
S. aureus count = 27
(*S. aureus* NBRC 13276)



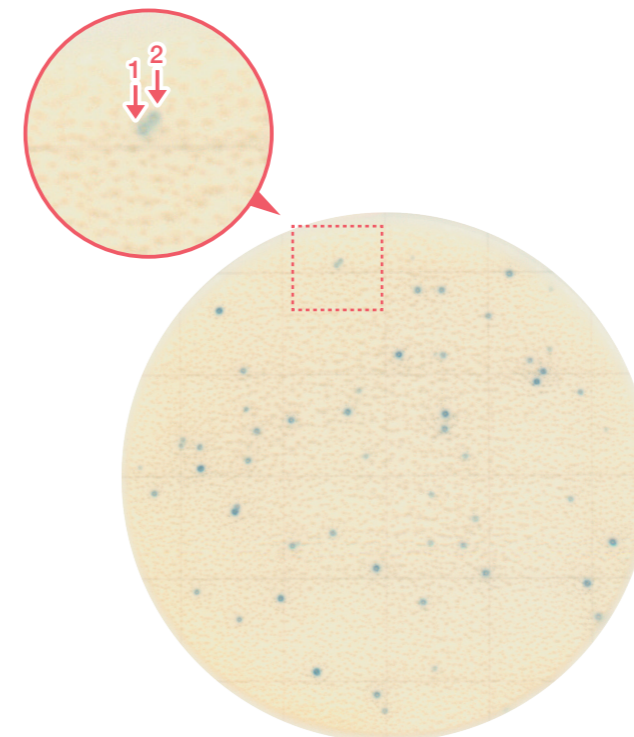
S. aureus count = 137
(*S. aureus* ATCC 8095)



S. aureus count = TNTC
(*S. aureus* ATCC 25904)

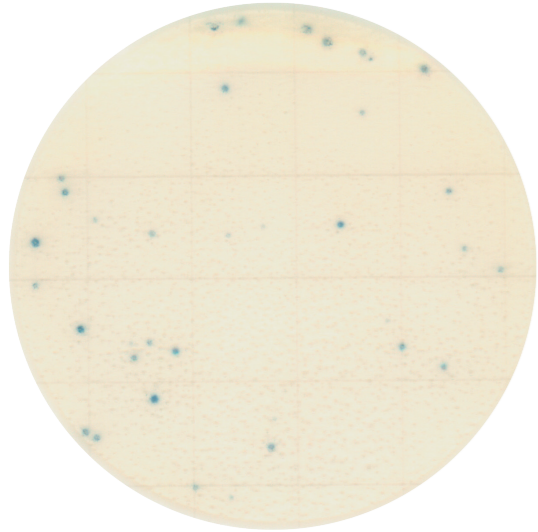


S. aureus count = 13
When a colony is spreading,
count it as one colony.
(Image: spinach with sesame dressing +
S. aureus NBRC 100910)

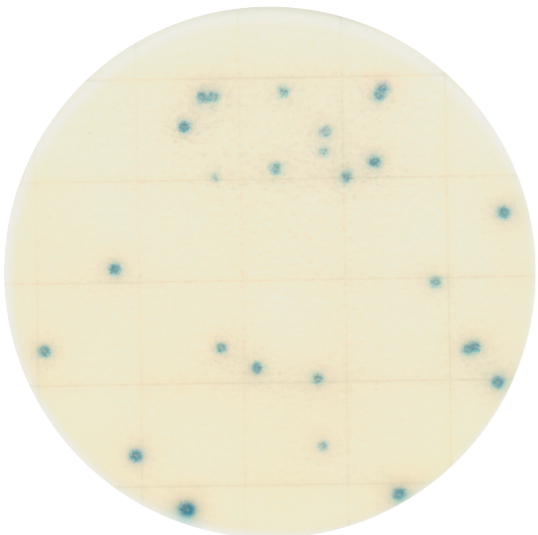


S. aureus count = 53
When two or more spreading
colonies appear to originate from
separate sources,
count each source as one colony.
(Image: *S. aureus* NBRC 12732)

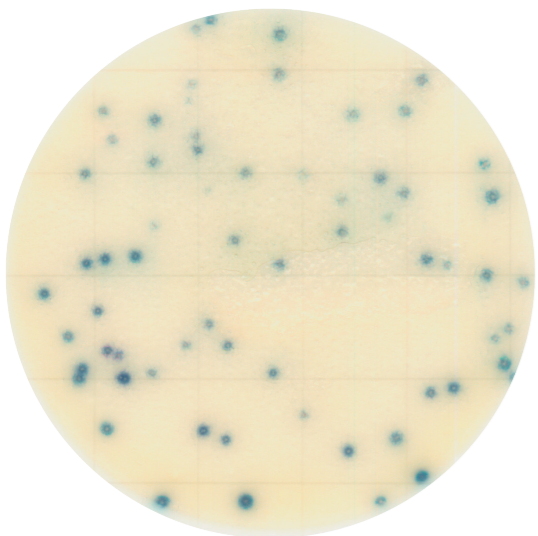
Examples of Incubation Result (Dairy Foods)



S. aureus count = 33
(Image: yogurt + *S. aureus* NBRC 13276)

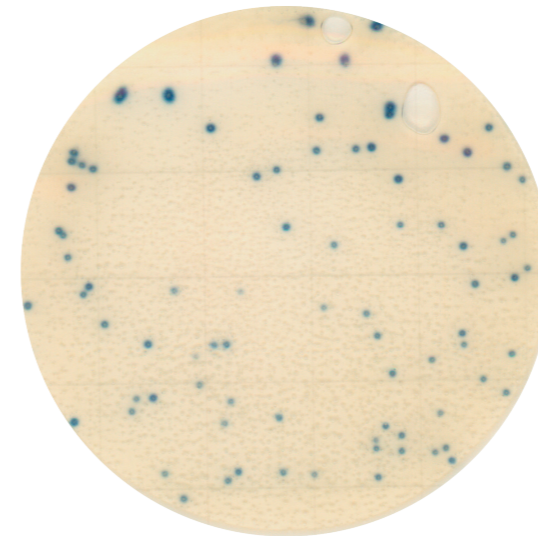


S. aureus count = 24
(Image: milk + *S. aureus* D0154)

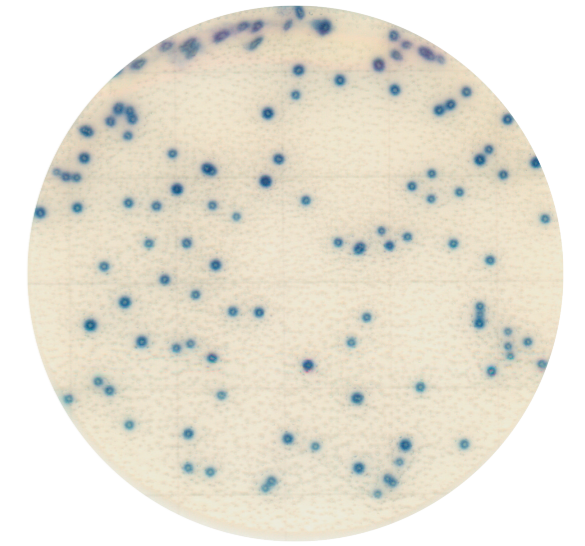


S. aureus count = 64
(Image: whipping cream + *S. aureus* D0152)

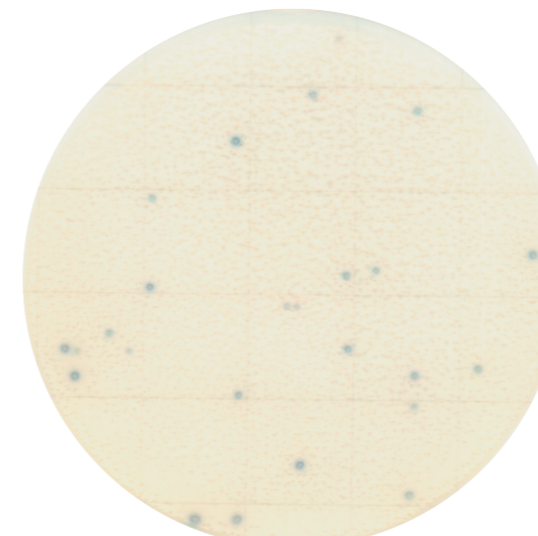
Examples of Incubation Result (Meat)



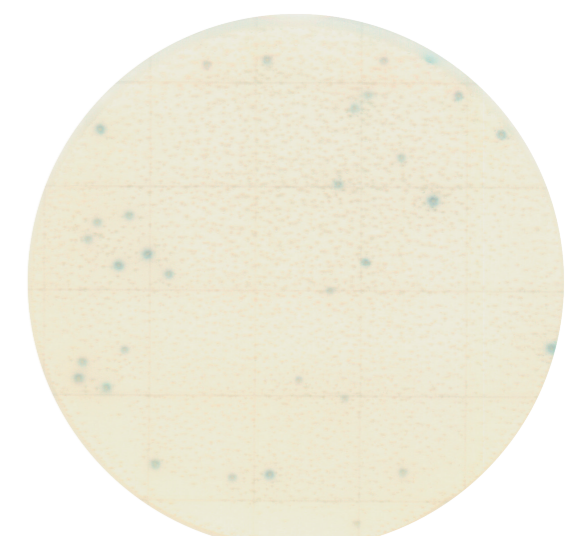
S. aureus count = 82
(Image: roast beef +
S. aureus NBRC 13276)



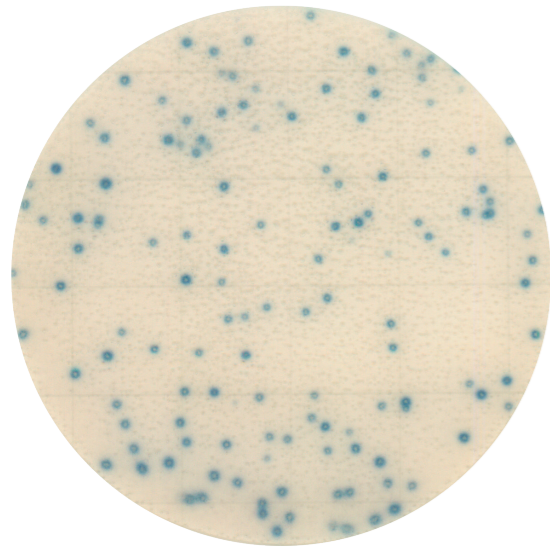
S. aureus count = 115
(Image: pork loin ham +
S. aureus NBRC 100910)



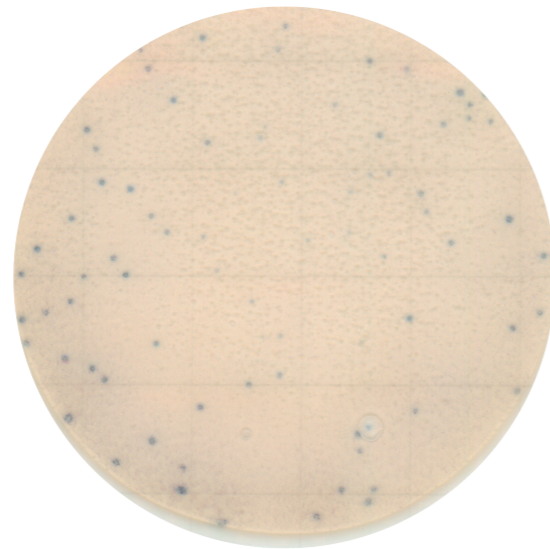
S. aureus count = 20
(Image: pork loin ham + *S. aureus*
isolated from ground beef and pork)



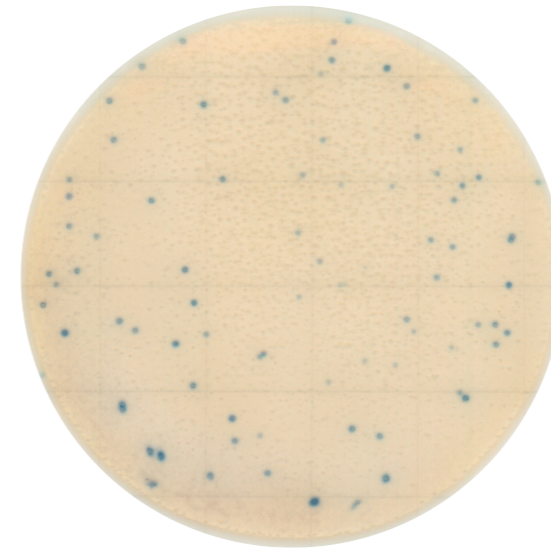
S. aureus count = 29
(Image: sausage + *S. aureus* isolated
from ground beef and pork)



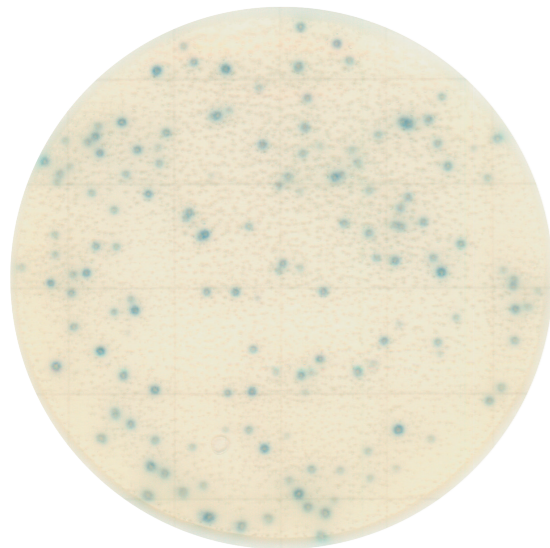
S. aureus count = 132
(Image: prosciutto +
S. aureus isolated from chicken)



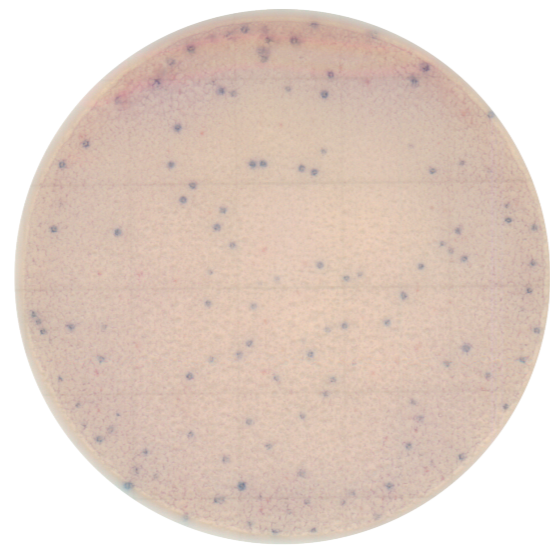
S. aureus count = 78
(Image: pork + *S. aureus* NBRC 13276)



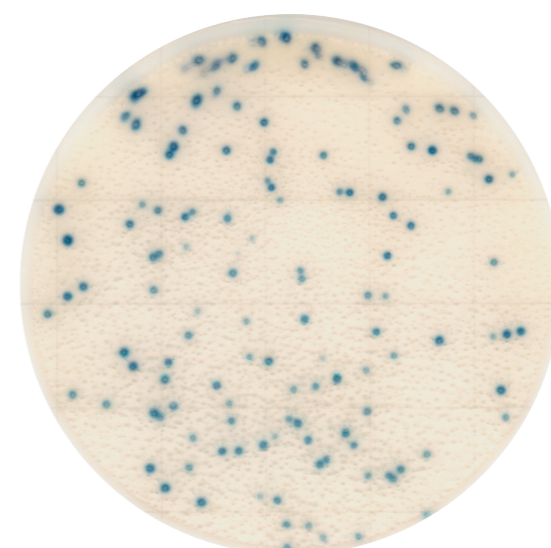
S. aureus count =79
(Image: beef + *S. aureus* NBRC 13276)



S. aureus count = 127
(Image: salami + *S. aureus* isolated
from ground beef and pork)



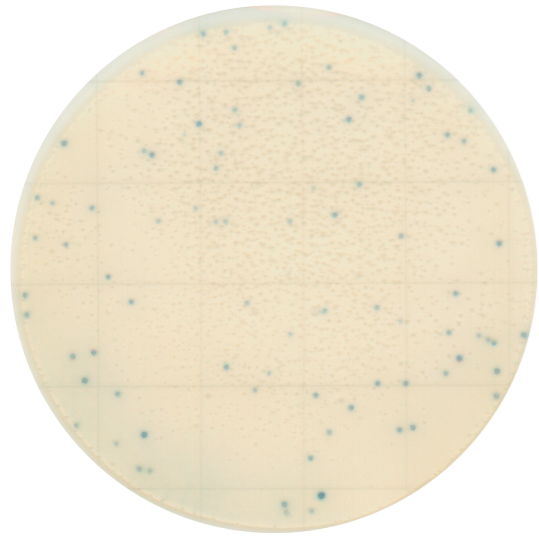
S. aureus count =102
(Image: chicken +
S. aureus isolated from chicken)



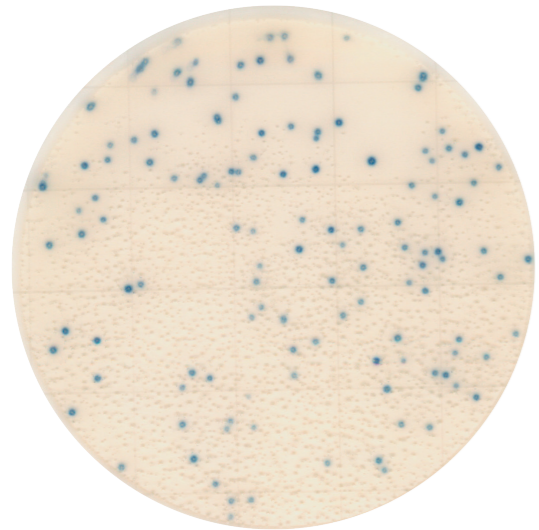
S. aureus count =134
(Image: uncured ham + *S. aureus* NBRC 13276)

For this case, the entire growth area becomes red-purple due to food components involving the chromogenic reaction. However, still blue colonies can be enumerated.
If it is difficult to enumerate due to coloring of entire growth area, prepare a higher dilution.
(Refer to "Troubleshooting A)" on page 12.)

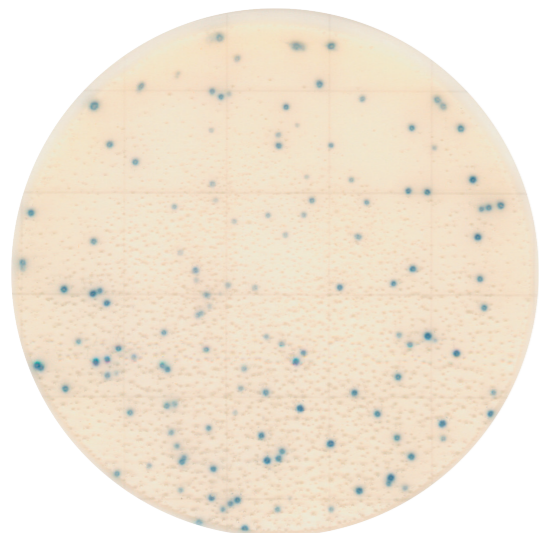
Examples of Incubation Result (Vegetable / Fruit)



S. aureus count = 82
(Image: melon+ *S. aureus* NBRC 13276)

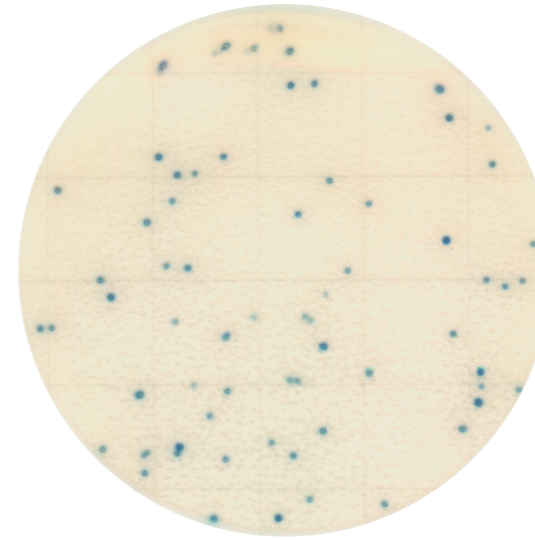


S. aureus count = 126
(Image: lettuce+ *S. aureus* NBRC 13276)

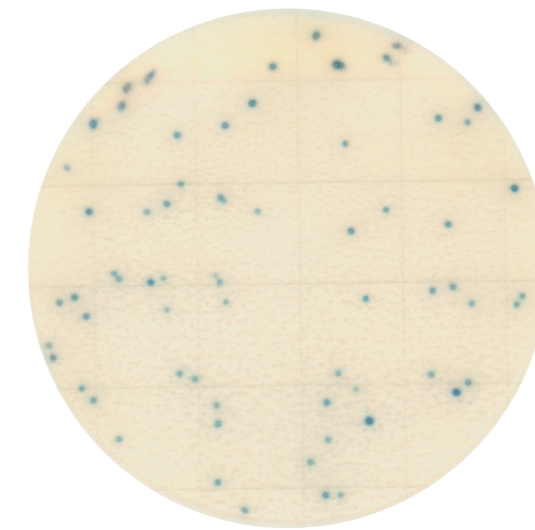


S. aureus count = 125
(Image: carrot + *S. aureus* NBRC 13276)

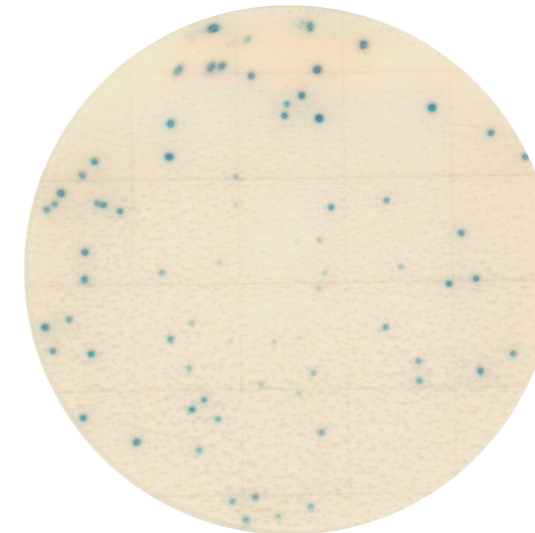
Examples of Incubation Result (Sweets)



S. aureus count = 66
(Image: baumkuchen + *S. aureus* NBRC 13276)

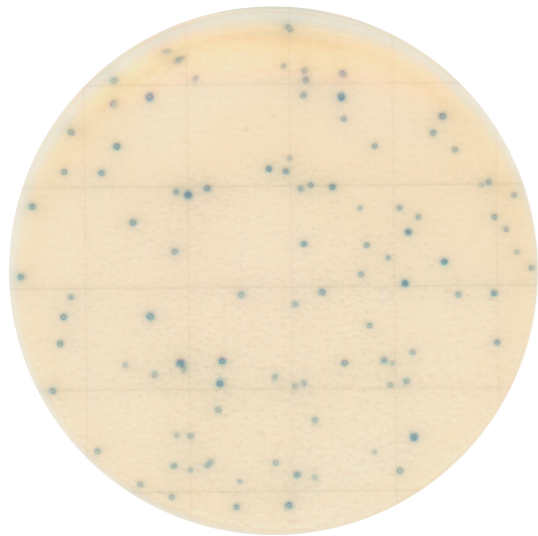


S. aureus count = 67
(Image: cream puff + *S. aureus* NBRC 13276)

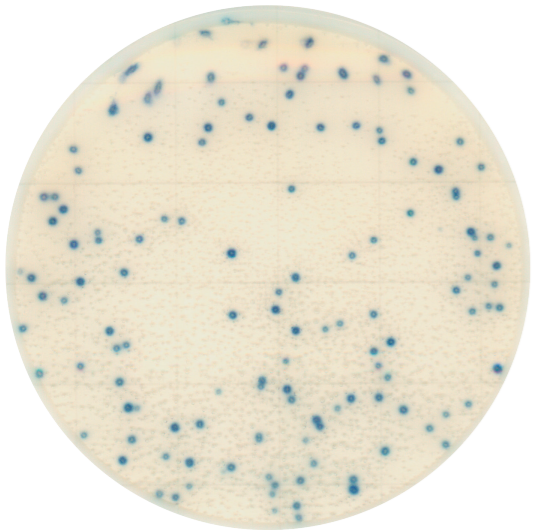


S. aureus count = 70
(Image: red bean rice cake + *S. aureus* NBRC 13276)

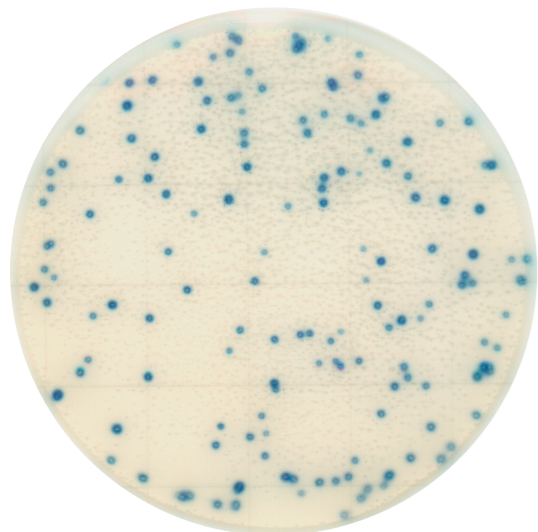
Examples of Incubation Result (Other)



S. aureus count = 96
(Image: noodle + *S. aureus* NBRC 100910)

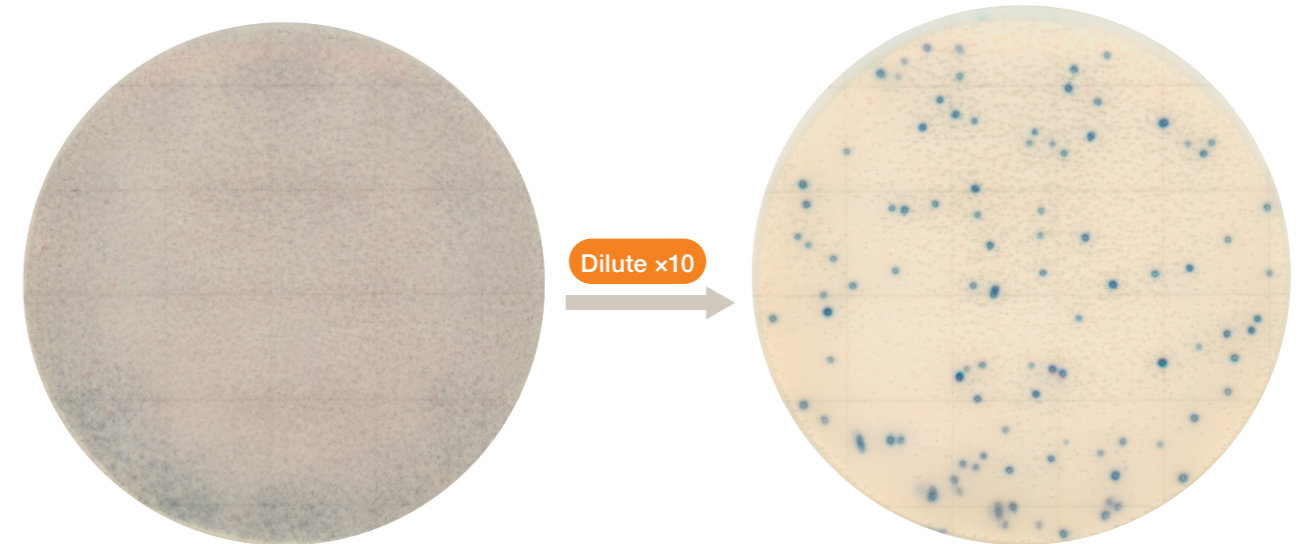


S. aureus count = 129
(Image: raw egg + *S. aureus* NBRC 100910)



S. aureus count = 143
(Image: fish cake + *S. aureus* NBRC 100910)

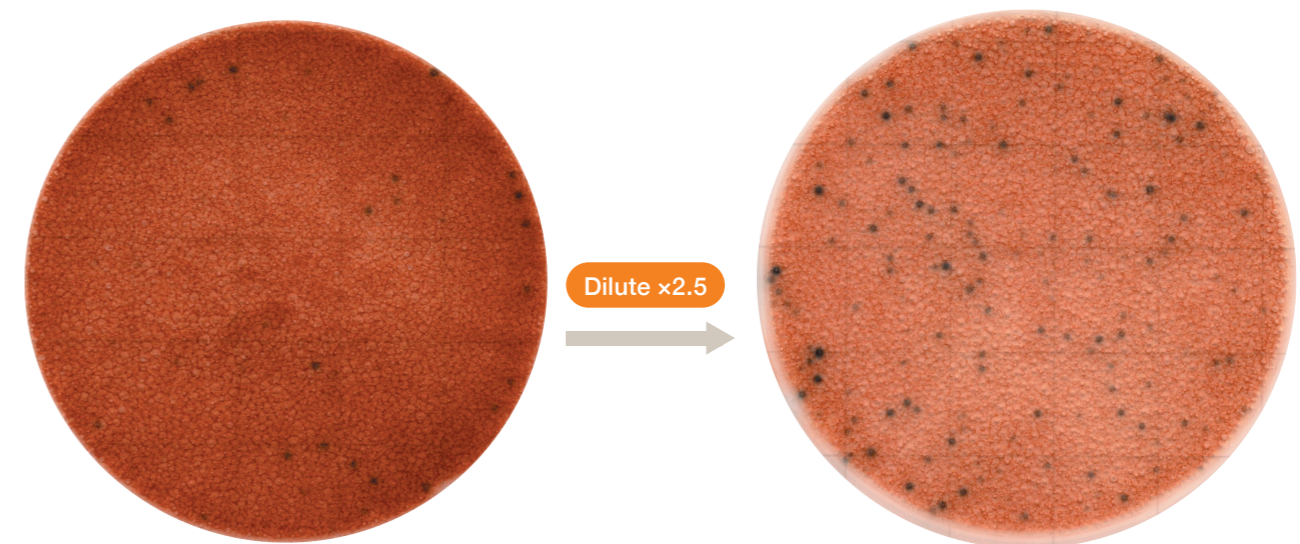
Trouble shooting for counting colonies



Entire growth area is coloring

S. aureus count = 100

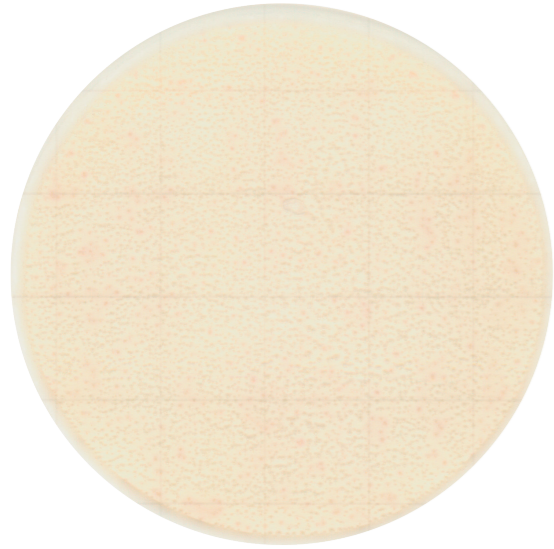
A) When the entire growth area becomes red-purple or blue due to food components involving the chromogenic reaction, prepare a higher dilution.
(Image: clam + *S. aureus* NBRC 100910)



S. aureus count = 25

S. aureus count = 126

B) When the sample is not clear (i.e. cloudy or dark), prepare a higher dilution.
(Image: chocolate + *S. aureus* ATCC 25923)



C) Rarely some *Staphylococcus* and *Bacillus* species may form pink colony.
(Image: *S. gallinarum* NBRC 109767T)

S. aureus count = 0



FMCG Industry Solutions Pty Ltd

ABN 22 135 446 007

📍 Factory 11A, 1 - 3 Endeavour Rd, Caringbah NSW 2229

🌐 www.fmcgis.com.au

✉ sales@fmcgis.com.au

☎ 1300 628 104 or 02 9540 2288