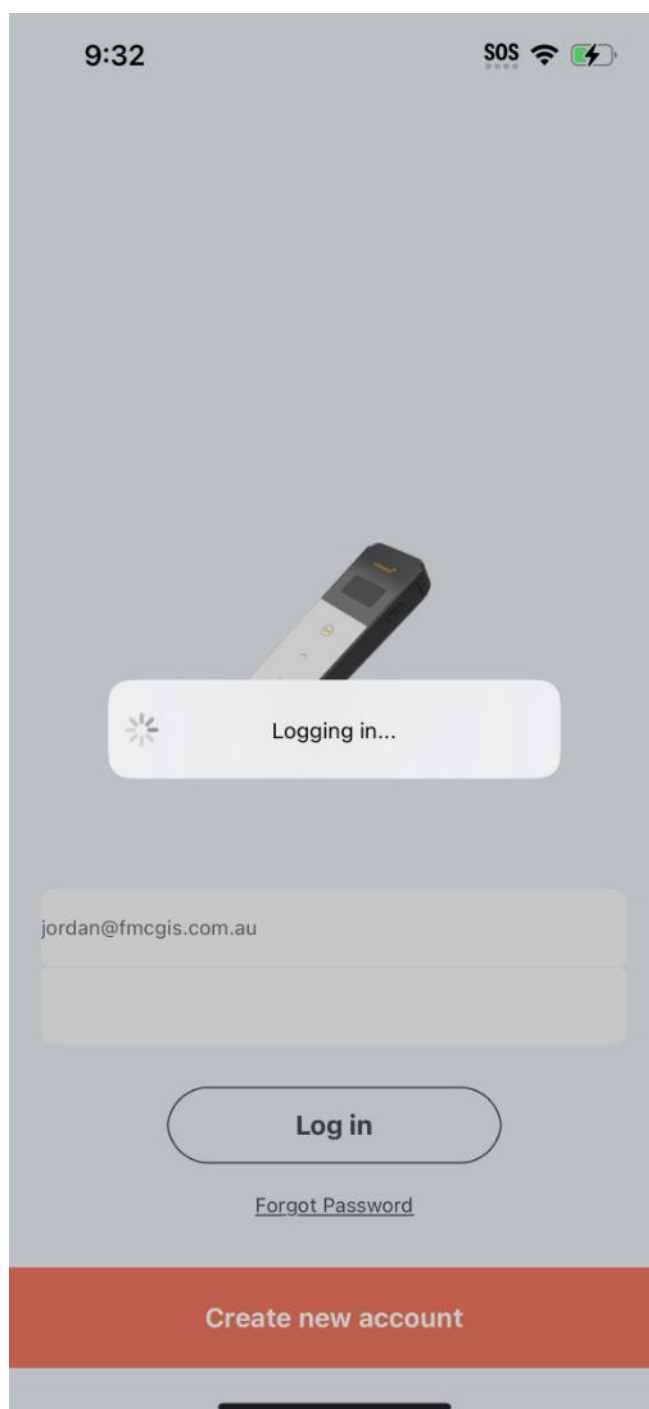
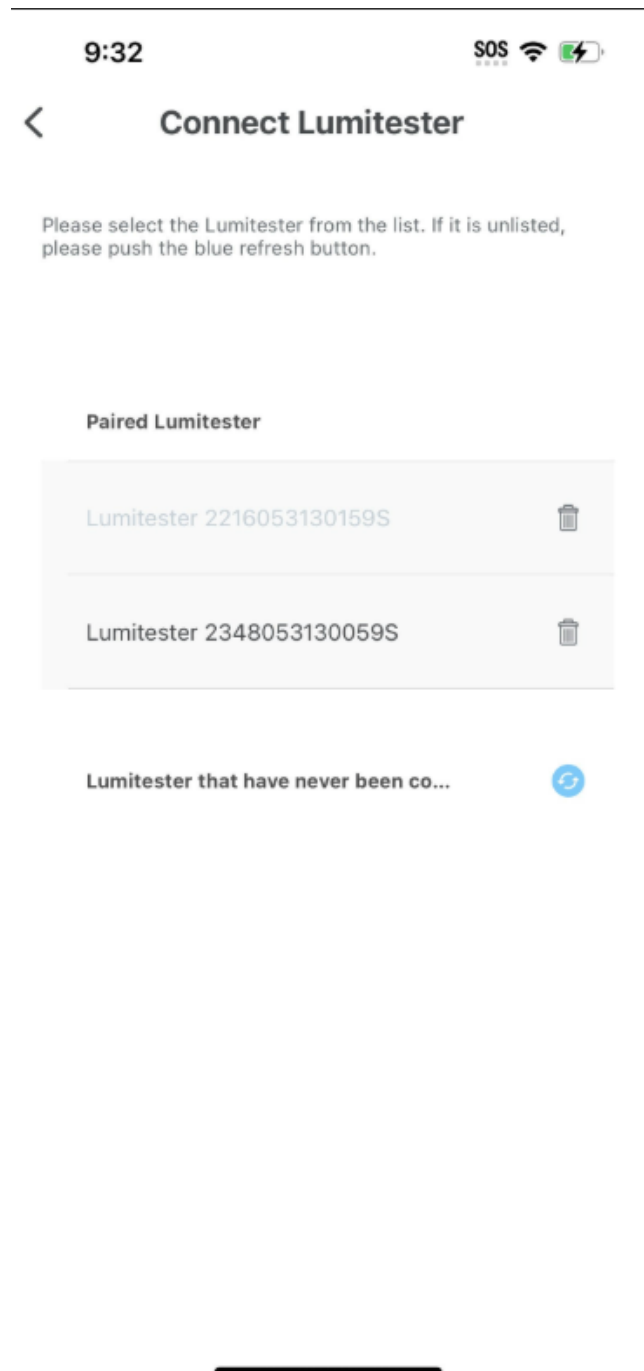
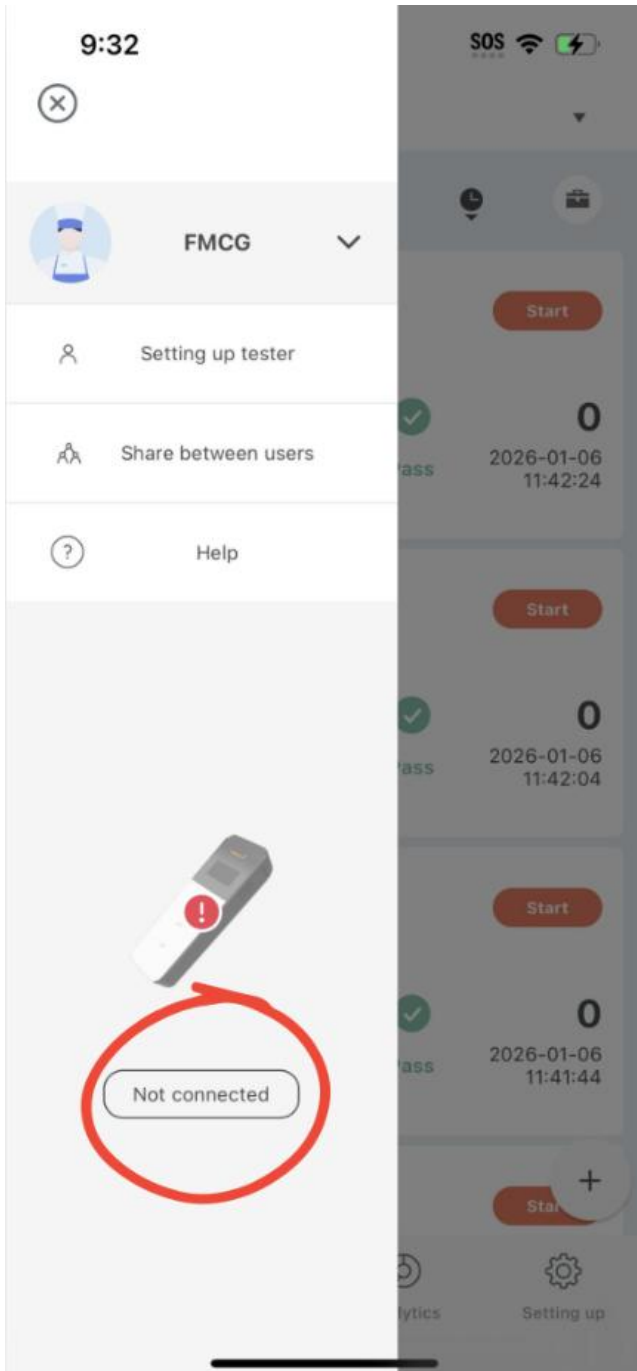


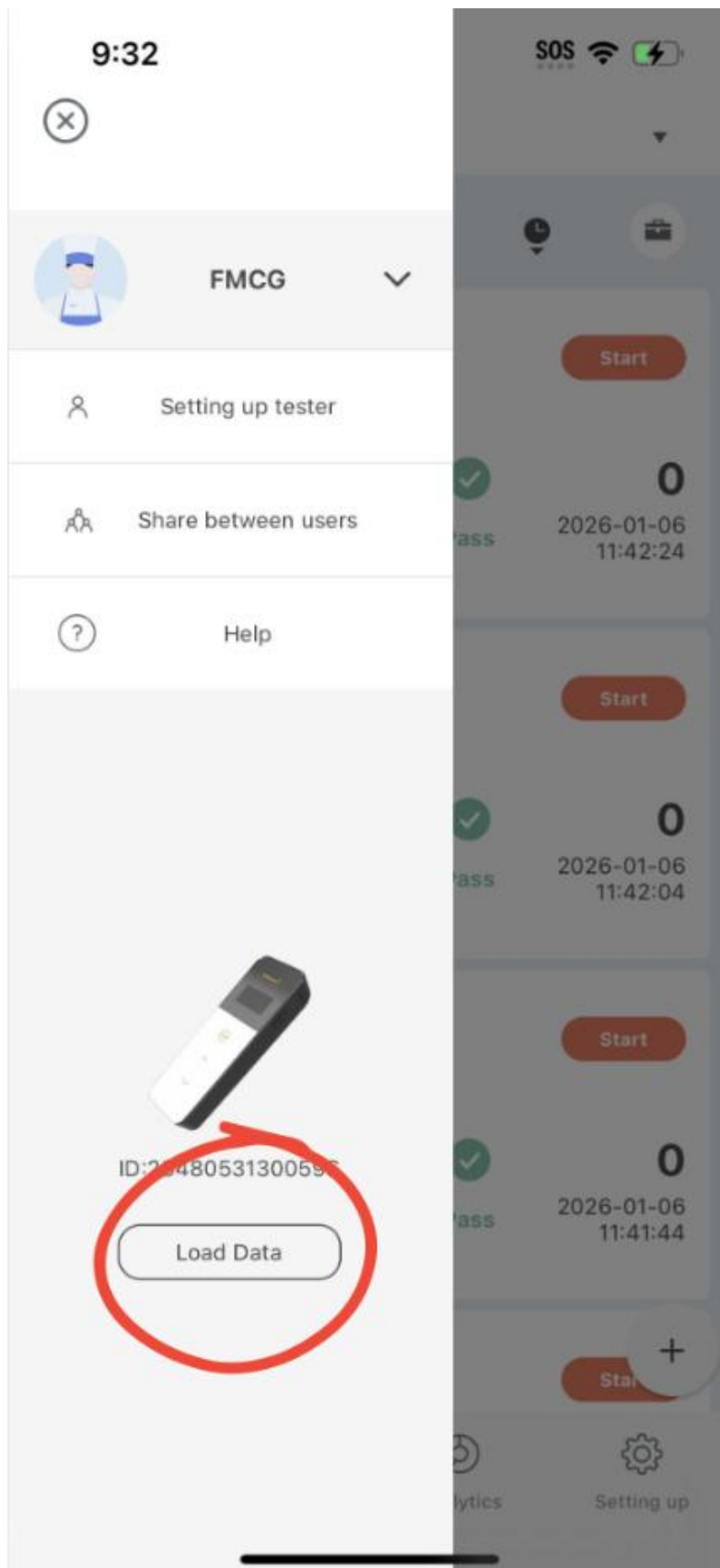
Lumitester Exporting Data Guide

Login to the Lumitester app with your account:

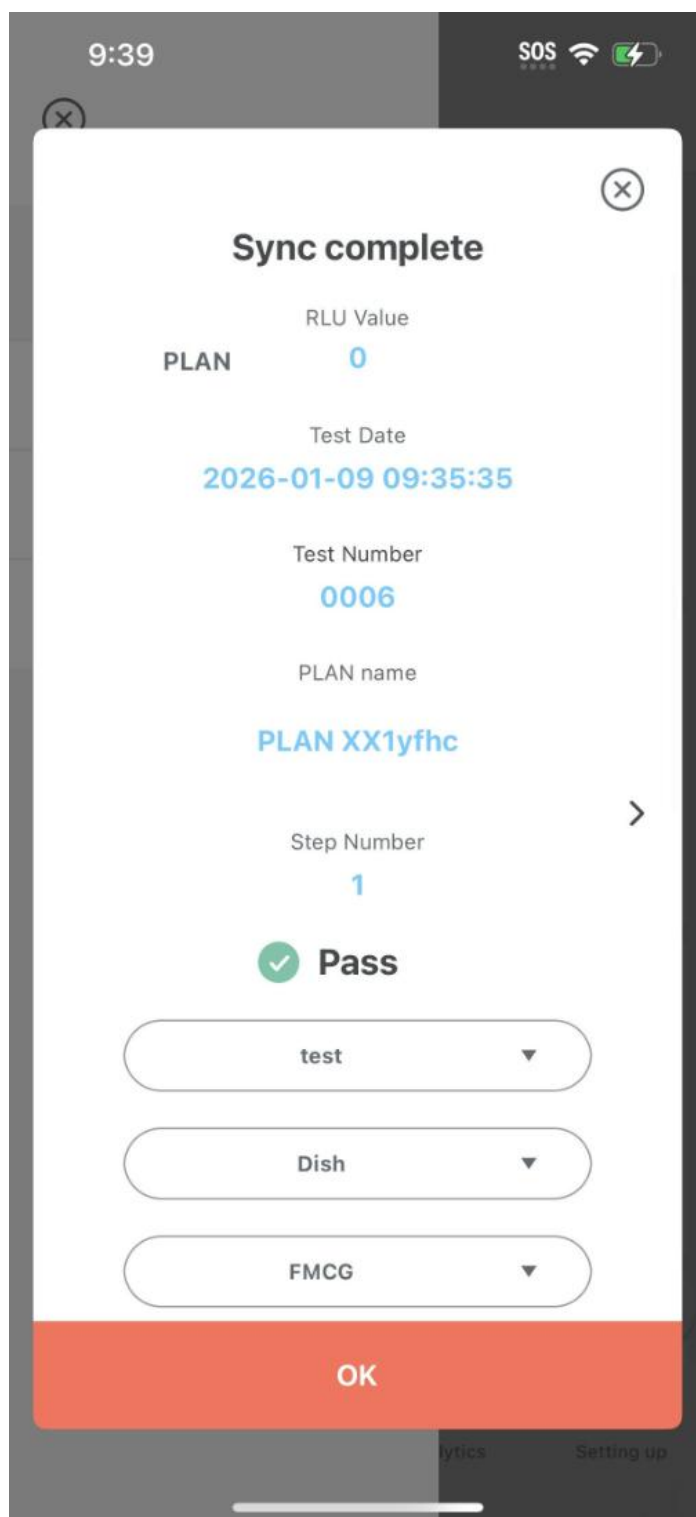


Once Lumitester has measured all required data, reconnect it to your mobile device via the app and click load data:

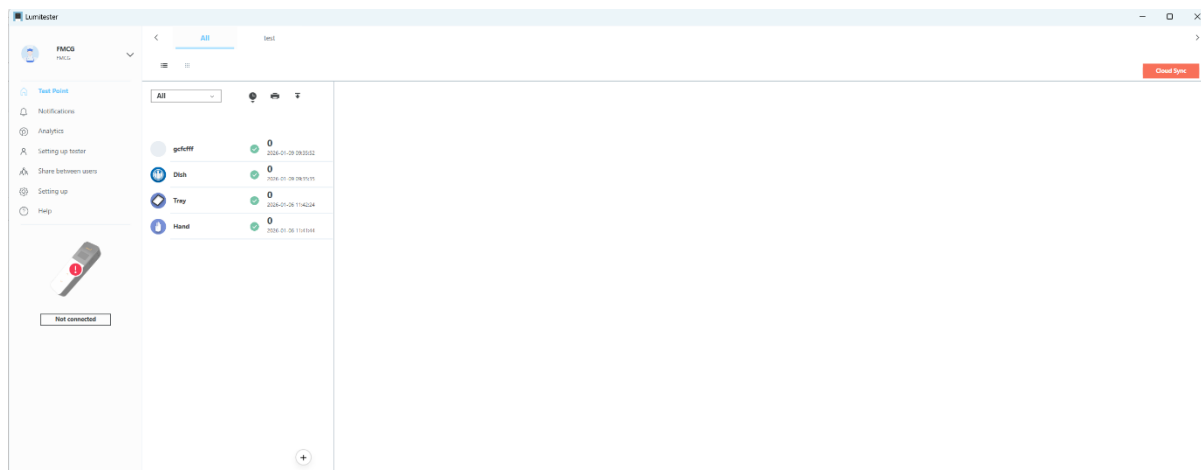




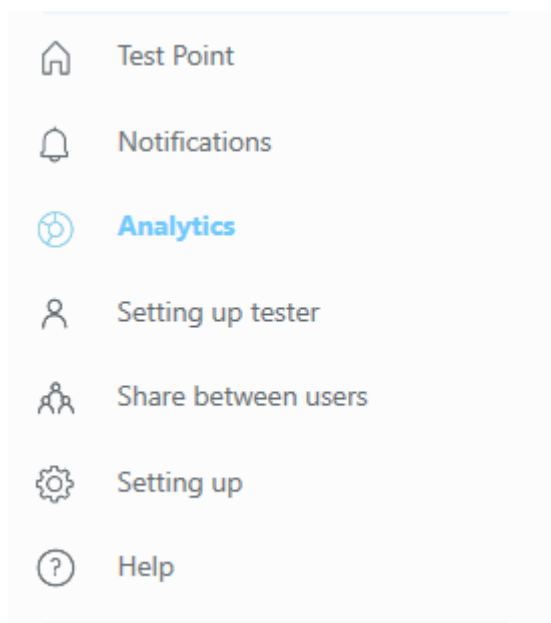
Fill the respective criteria out:



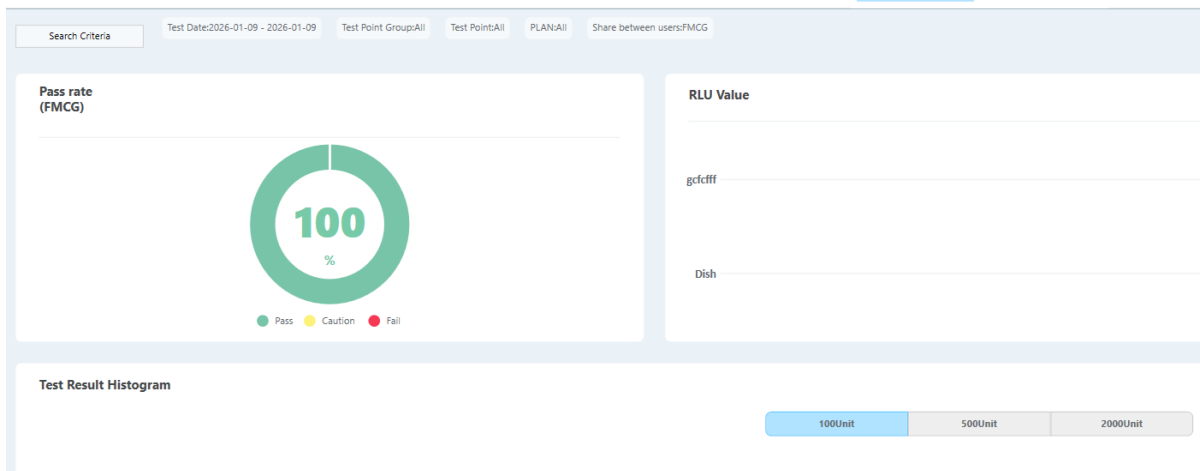
The data has now been synced to your account. Login to the Lumitester app on your computer:



Click on analytics



Click on search criteria and change the limits to today's date:



Search Criteria ✕

Filter results by specific criteria. The filtered results will be displayed on the graph.

Test Date

9/01/2026 - 9/01/2026 Do not specify a date

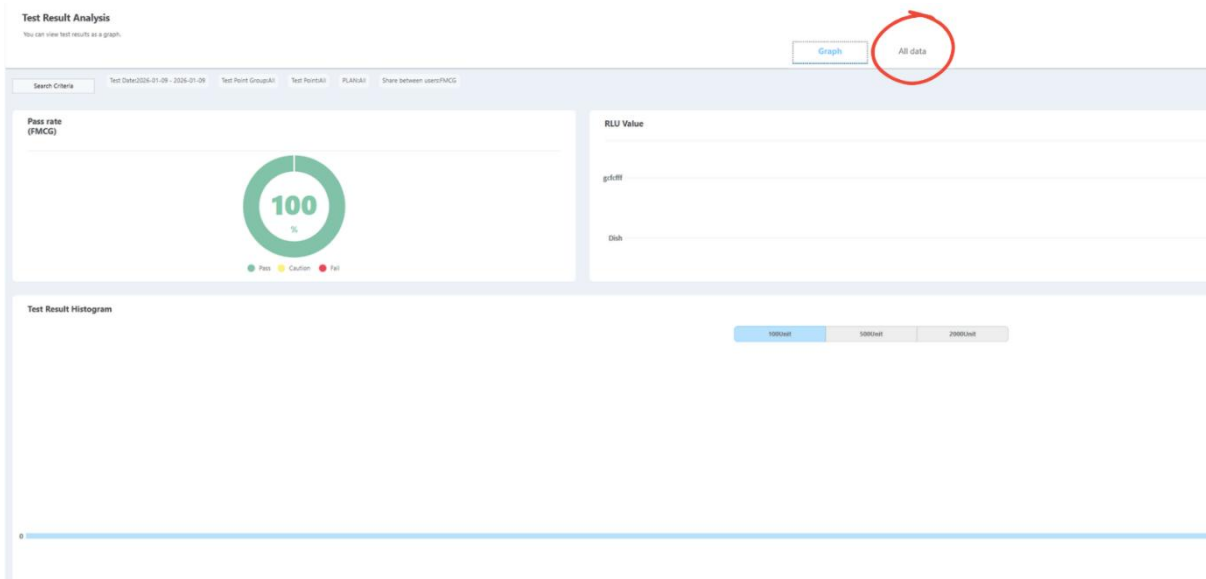
Test Point Group **PLAN**

Share between users **Test Result** -

Pass Caution Fail View data in recycle bin

OK

Click on all data and then download the excel file by clicking the download button on the top right. Save the file



Graph [All data](#)

Test Point	Test Result	Pass/Fail	Benchmark Value 1	Benchmark Value 2	Test Date	Tester	Admin. Dept./Administrator
grdOff	0	Pass	500	1,000	2026-01-09 09:55:52	FMCG	FMCG
Dish	0	Pass	200	400	2026-01-09 09:55:55	FMCG	FMCG



FMCG Industry Solutions Pty Ltd

ABN 22 135 446 007

📍 Factory 11A, 1 – 3 Endeavour Rd, Caringbah NSW 2229

🌐 www.fmcgis.com.au

✉ sales@fmcgis.com.au

☎ 1300 628 104 or 02 9540 2288