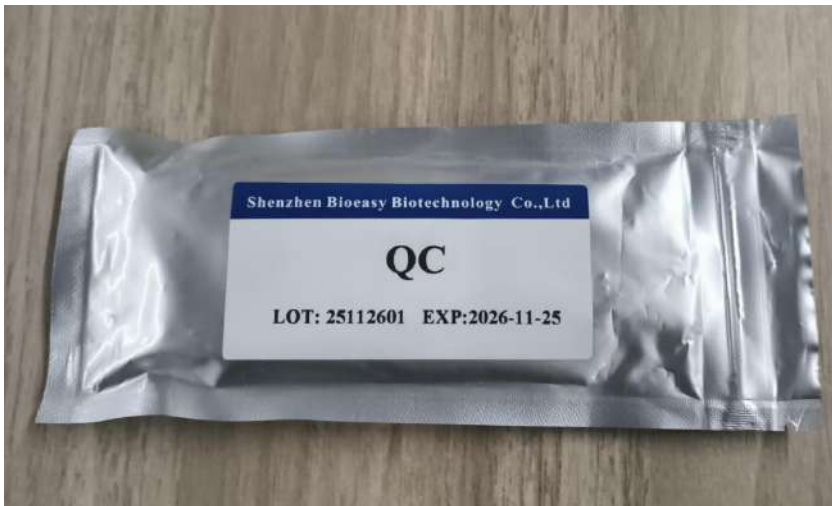


## QC Card User Instructions:

Note: Do not add samples to the QC card!!!

1. Take out the ID chip and read it with the instrument.
2. Insert the QC card into the instrument slot; the instrument will automatically begin testing.
3. Instrument results display:
  - (1) Result: PASS;
  - (2) Result: FAIL. Please contact the manufacturer.





**FMCG Industry Solutions Pty Ltd**

ABN 22 135 446 007

📍 Factory 11A, 1 - 3 Endeavour Rd, Caringbah NSW 2229

🌐 [www.fmcgis.com.au](http://www.fmcgis.com.au)

✉ [sales@fmcgis.com.au](mailto:sales@fmcgis.com.au)

☎ 1300 628 104 or 02 9540 2288