

Easy Plate™ LS


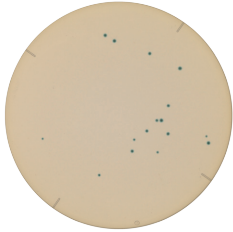


Prepared Media Plate For *Listeria* Species

Easy Plate™ LS is a custom media formulation for cultivation of *Listeria* species. A prepared plate that contains a chemical indicator that provides easily distinguishable blue-colored colonies, allowing you to easily identify and count *Listeria* species in 24 hours.

Comparison of Performance

Easy Plate™ LS vs Plate Count Agar 24 hours incubation

Easy Plate™ LS	ALOA agar
<p>Easily distinguishable brightly colored colonies</p> 	
<p>Example: <i>Listeria innocua</i> (JCM 32814)</p>	

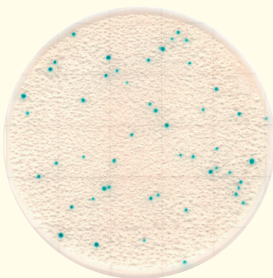
Interpretation

Count all blue colonies regardless of size or intensity.

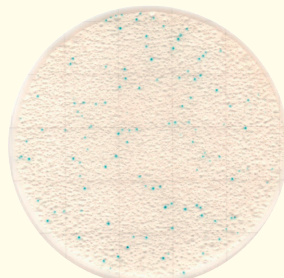
The appropriate number of colonies is between 1 and 250.

Product Code	61800
Incubation temperature	35±1°C or 37±1°C
Incubation time	24±1 hours
Storage condition	2–8°C
Shelf life	18 months

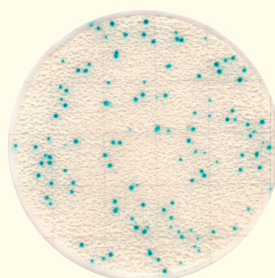
Example Colonies after 24 Hours Incubation (Strains)



Listeria monocytogenes
(ATCC 19118)



Listeria monocytogenes
(JCM 7671)



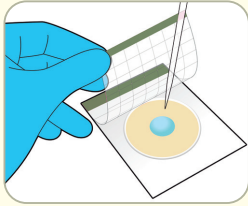
Listeria innocua
(JCM 32814)



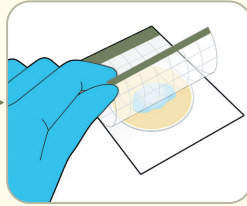
Listeria welshimeri
(JCM 32816)

How to Use

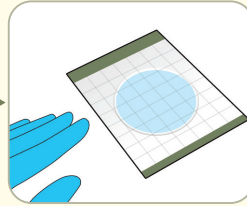
• For Quantitative Test



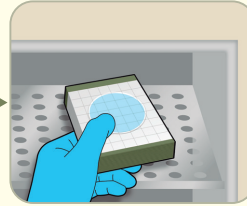
A1) Lift the cover and place 1 mL sample suspension onto the center of the plate.



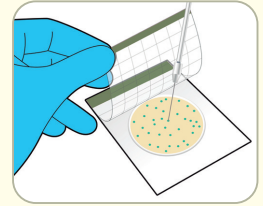
A2) Lower the cover onto the sheet and allow the sample to spread evenly.



A3) Allow the plate to settle for 3 min or more on a horizontal surface for solidification.

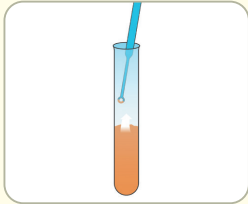


A4) Incubate the plate(s) at $35\pm 1^\circ\text{C}$ or $37\pm 1^\circ\text{C}$ for 24 hours. Up to 25 plates can be stacked. After incubation, count all blue colonies regardless of size or intensity.

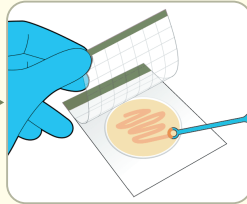


[Optional] Colony Isolation: Lift the cover and pick a single colony from the gel.

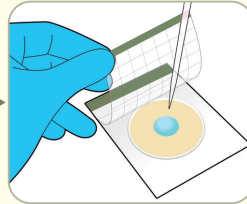
• For Qualitative Test



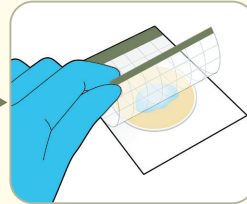
B1) Sample the selectively enriched culture solution. For selective enrichment, please use Half-Fraser broth or similar selective enrichment media.



B2) Lift the cover and streak the selectively enriched culture onto the dry plate.



B3) Lift the cover and place 1 mL sterile water onto the center of the plate.



B4) Lower the cover onto the sheet and allow the sample to spread evenly. Incubate step is same as above step A4.

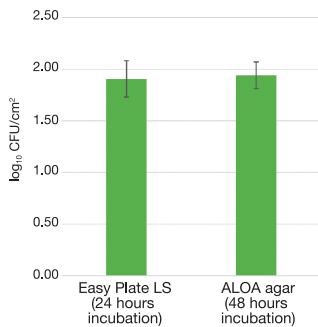


Listeria monocytogenes
(JCM 7675)

* The sample preparation methods differ between environmental samples and food and beverage samples. For the preparation methods applicable to each case, please refer to the instruction manual.

• Excellent media performance

Faster Testing Enabled – Results equivalent to agar media in 24 hours.



Sample:
Swabbed sample on artificially contaminated ceramic tile.
Swabbing solution:
PBS
Strain:
L. monocytogenes,
Enterococcus faecalis

• Colony Counting System for Easy Plate™

• Feeder for Easy Plate

Simpler, time-saving way to count colonies that eliminates the effects of variation and skill level among operators. With the Feeder for Easy Plate, batch scanning is available.



Learn more about Colony Counting System for Easy Plate !!

*Requires use of the scanner ADS-4300N by BROTHER INDUSTRIES, LTD. for imaging Easy Plate. Scanner sold separately.



Easy Plate™ Series

AOAC PTM Certified *

MicroVal Certified **

NordVal Certified **

* Easy Plate LS is under validation. ** Easy Plate AC-R, LS is under validation.

- 1 Easy Plate™ AC - Aerobic Bacteria
- 2 Easy Plate™ CC - Coliform
- 3 Easy Plate™ EC - *E. coli* / Coliform
- 4 Easy Plate™ SA - *S. aureus*

- 5 Easy Plate™ YM-R - Yeast and Mold (Rapid Type)
- 6 Easy Plate™ EB - *Enterobacteriaceae*
- 7 Easy Plate™ AC-R - Aerobic Bacteria (Rapid Type)
- 8 Easy Plate™ LS - *Listeria* Species

kikkoman

Kikkoman Biochemifa Company

2-1-1 Nishi-Shinbashi, Minato-ku, Tokyo 105-0003, Japan

E-mail: biochemifa@mail.kikkoman.co.jp

URL: <https://biochemifa.kikkoman.com/e/>

*The information contained in this catalog may change without notice.

©2026 Kikkoman Corp. (6012Y260301)



FMCG Industry Solutions Pty Ltd

ABN 22 135 446 007

Factory 11A, 1 - 3 Endeavour Rd, Caringbah NSW 2229

www.fmcgis.com.au

sales@fmcgis.com.au

1300 628 104 or 02 9540 2288