

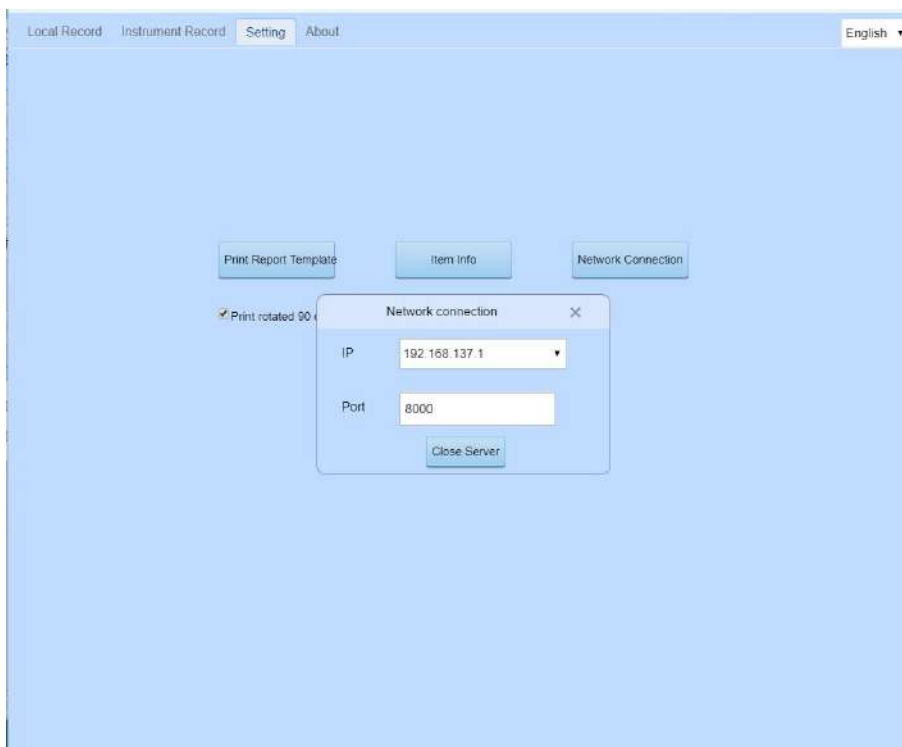
# User Guide for Integrating EASY-11 with Bioeasy DMS

Installation Requirements for the Bioeasy Data Management System:

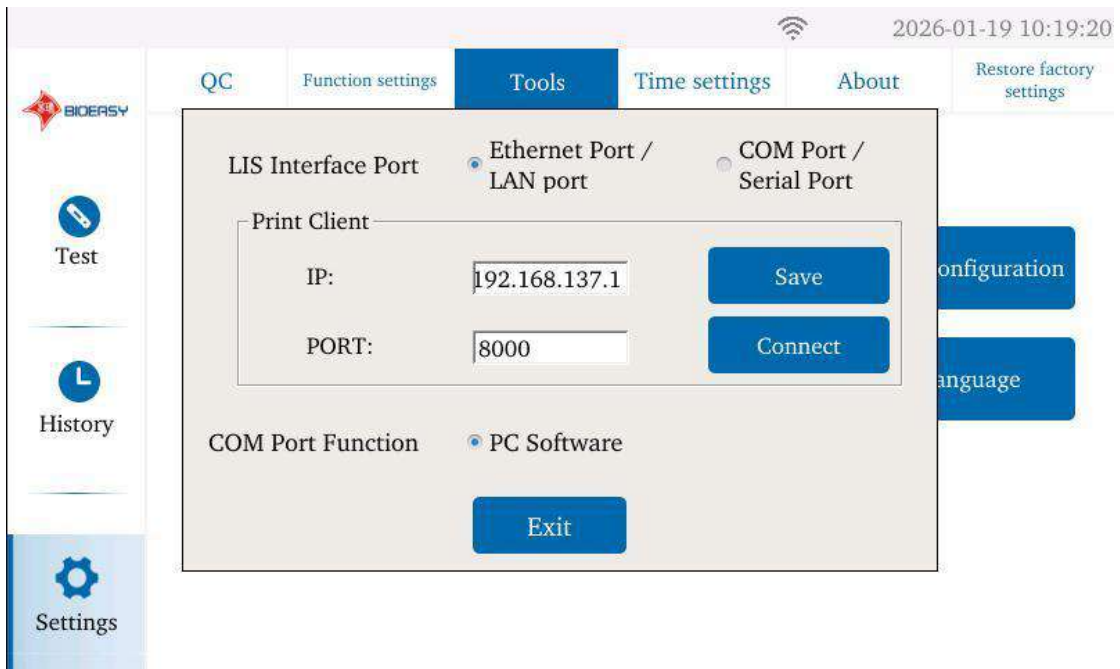
- Windows operating system is required
- Not compatible with macOS (Apple computers)

Network connection

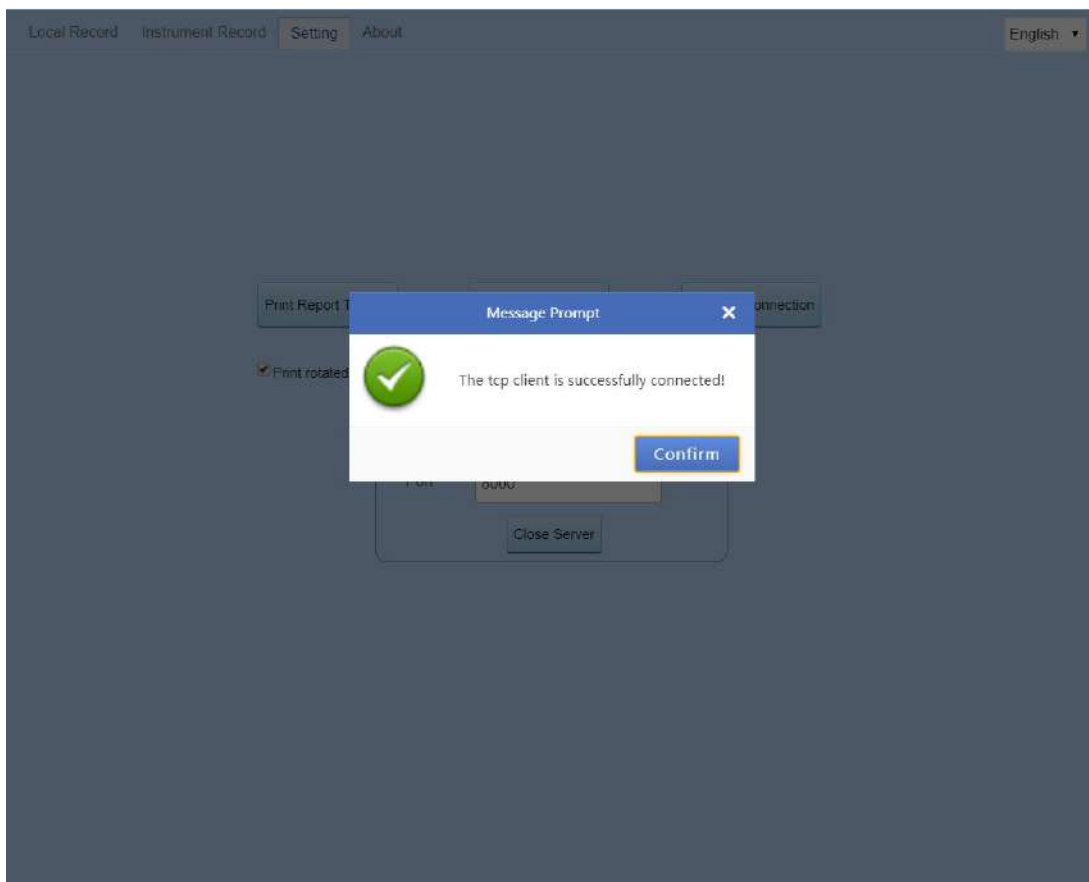
1. Install and open “Bioeasy Data Management System” → “Settings” → “Network Connection” → “Create Service.”



2. Update the instrument software to version V1.5.L08 or the latest version.
3. On the instrument, open “System Settings” → “Tools” → “Port Configuration” → select “Ethernet Port”. Enter the IP address and port shown in the Bioeasy DMS-side “Network Connection” as the IP and Port.



4. After entering the information, tap "Save" → "Connect". A pop-up will appear on the Bioeasy DMS indicating that the connection is successful.



Note: Due to network latency, the transmission speed may be slower. After the test is completed, data will be automatically transmitted, and it may take approximately 5

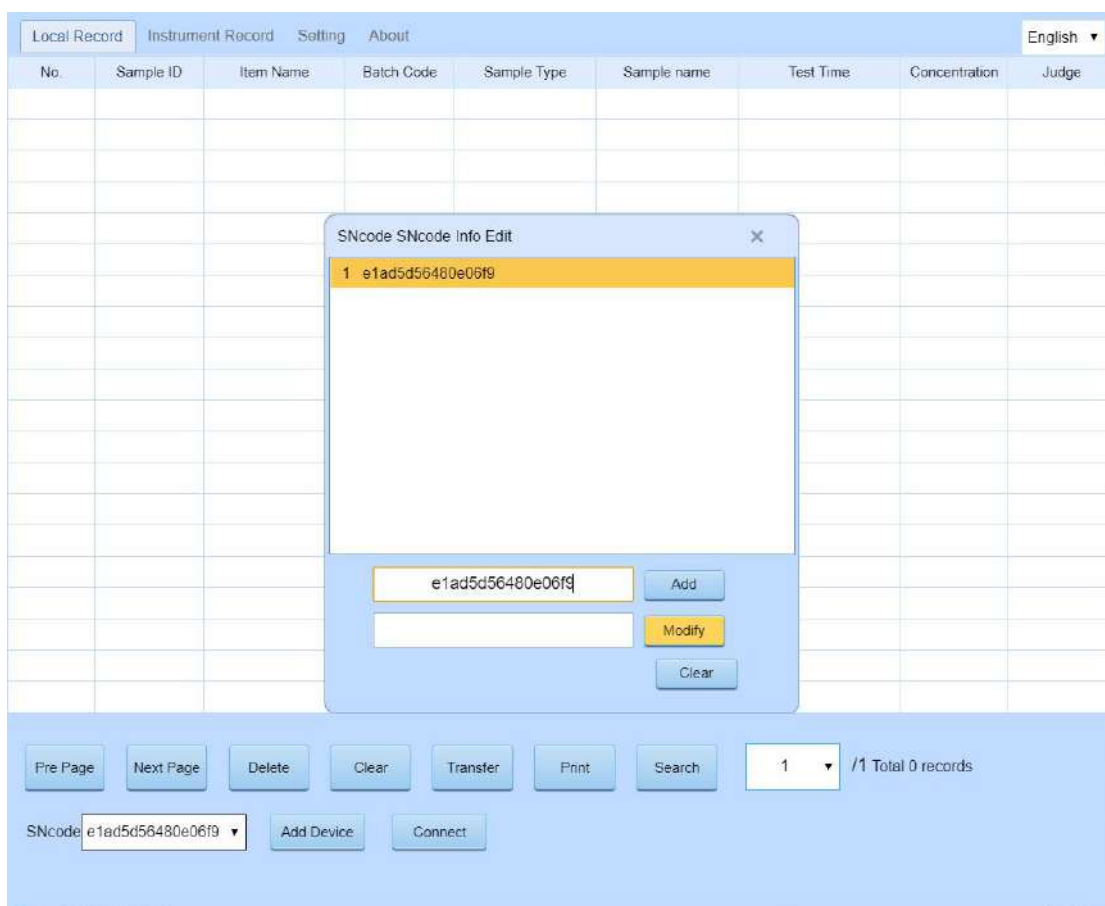
seconds for the Bioeasy DMS to receive it. The instrument log acquisition rate is approximately 1 record per second.

## Serial connection

1. Use a serial cable to connect the instrument to the computer.

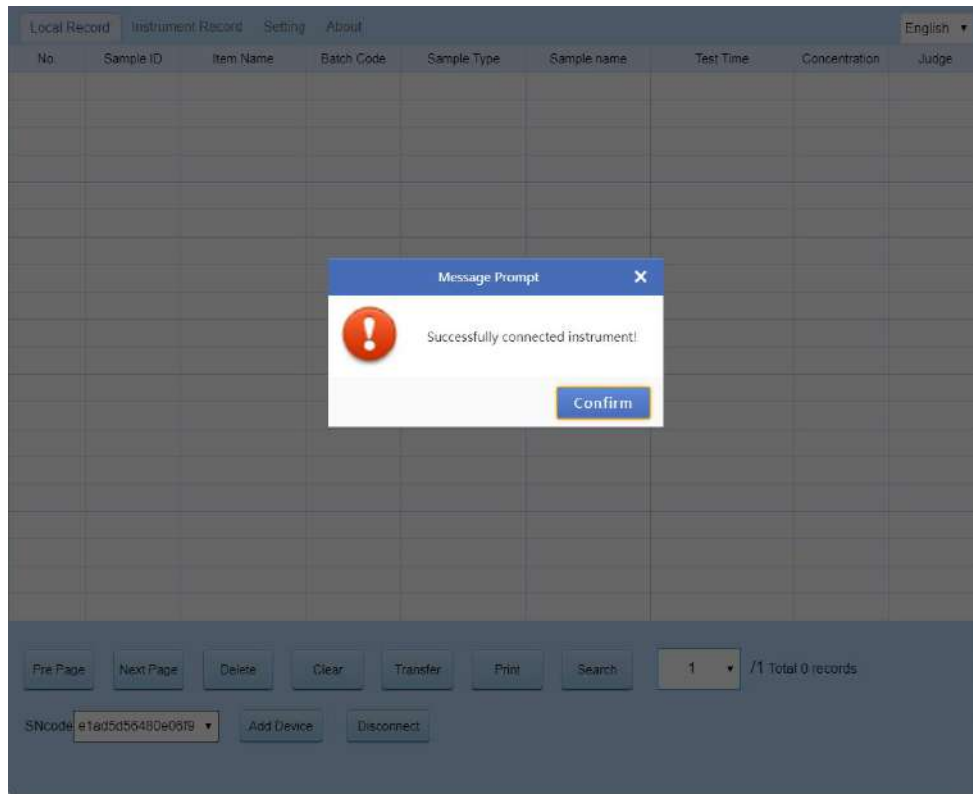


2. On the Bioeasy DMS, open “Local Record” → “Add Device”. Enter the instrument serial number and click “Add”, then restart the software.



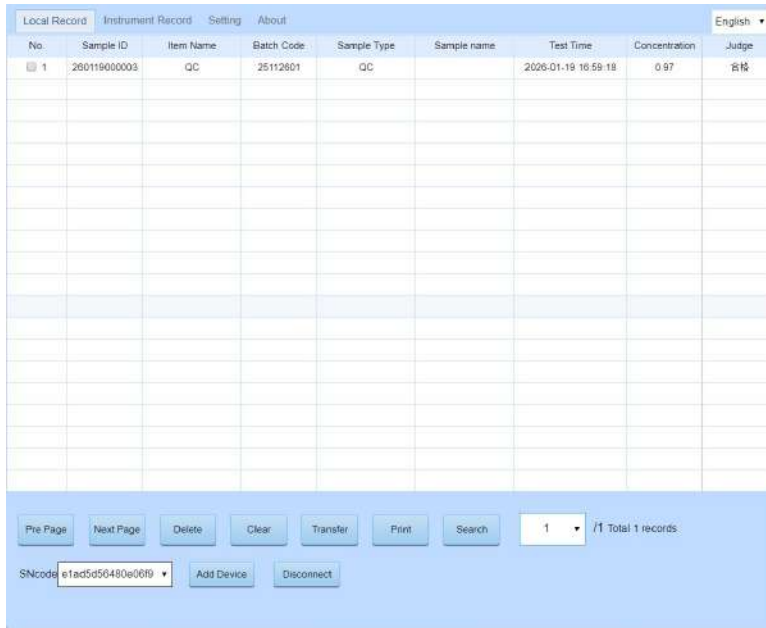
The screenshot displays the Bioeasy DMS software interface. The main window shows a table with columns: No., Sample ID, Item Name, Batch Code, Sample Type, Sample name, Test Time, Concentration, and Judge. A dialog box titled 'SNcode Info Edit' is open, showing a list of SNcodes with the first entry '1 e1ad5d56480e06f9' selected. Below the list, there is a text input field containing 'e1ad5d56480e06f9', and buttons for 'Add', 'Modify', and 'Clear'. At the bottom of the software interface, there are buttons for 'Pre Page', 'Next Page', 'Delete', 'Clear', 'Transfer', 'Print', 'Search', and a dropdown menu showing '1 / 1 Total 0 records'. The 'SNcode' dropdown menu is also visible, showing the selected serial number 'e1ad5d56480e06f9' and buttons for 'Add Device' and 'Connect'.

3. Click "Connect" A pop-up will appear saying "Successfully Connected instrument ,," indicating that the connection is complete.

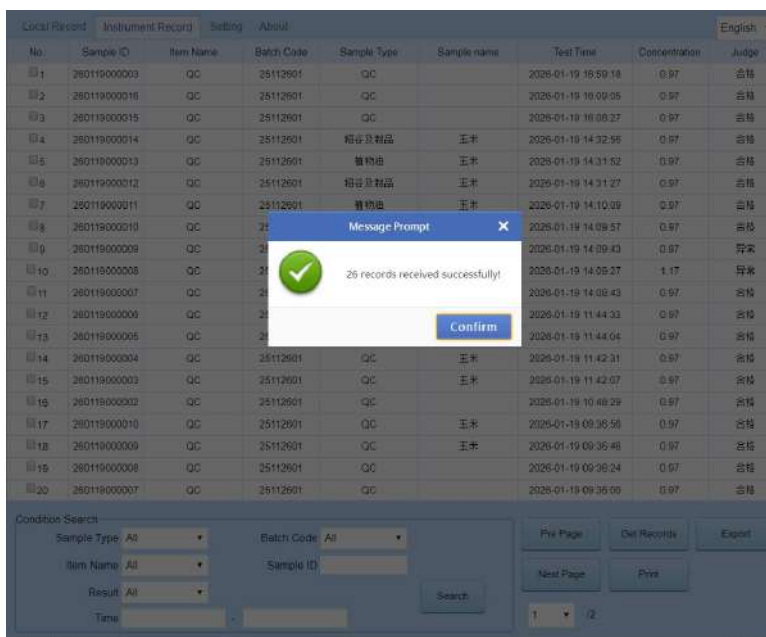


### ☰ Instructions for Use

1. After the Bioeasy DMS and instrument are successfully connected, the test results will be automatically uploaded to the Bioeasy DMS once the test is completed on the instrument. The results will be displayed under "Local Record."



2. "Instrument Record" allows you to retrieve all previously tested data stored in the instrument.

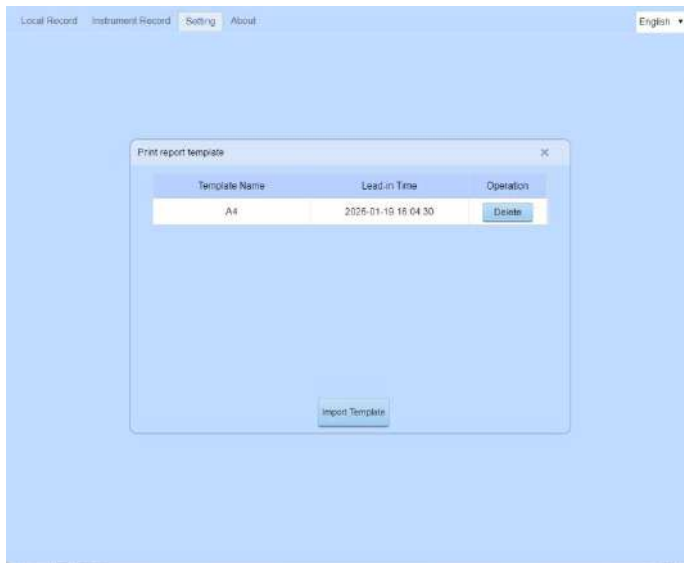


3. "Language Switch": The Bioeasy DMS supports Chinese/English/Spanish, which can be selected from the upper right corner of the interface.



4. In "Settings" → "Print Report Template," import a report template to enable external

printer support (A4/A5 paper). In “Local Records” or “Instrument Records,” select the data to be printed and view the print preview.



**FMCG Industry Solutions Pty Ltd**

ABN 22 135 446 007

📍 Factory 11A, 1 - 3 Endeavour Rd, Caringbah NSW 2229

🌐 [www.fmcgis.com.au](http://www.fmcgis.com.au)

✉ [sales@fmcgis.com.au](mailto:sales@fmcgis.com.au)

☎ 1300 628 104 or 02 9540 2288